

PRICE: \$989,900

INCLUDED INTERIOR FEATURES

- Premium 5¼ Base Moldings
- Premium 3½ Casing Moldings
- Staircase, wood railing with metal spindles
- Fireplace (Vent-free) with Cultured stone surround (5'-0" tall) and Mantle
- Ceiling Fan pre-wire at Great Room & Master Bedroom
- Premium Carpet and Pad Throughout
- Wood Flooring Foyer, Dining Room, Kitchen, Breakfast Room And Great Room
- Ceramic Tile Bathroom Floors
- Tile tub/shower walls
- Master bath, Premium Vanity Tops, Granite with under-mount bowl, adult height cabinetry
- Hall baths to be upgraded granite with under-mount sink.
- Powder room has a pedestal sink
- Standard Plate Glass Mirrors in all Bathrooms (per plan)
- Elongated Commodes standard in White
- Exhaust Fans in all Baths
- Standard Masonite Interior Doors, (8'-0" at 1st Floor, 6'-8" at 2nd floor)
- Continuous Slide Wire Shelving in Closets
- 75-Gallon Hot Water Heater
- First Floor Laundry and Dryer Vent, base cabinet and sink with granite top, standard edge and electric dryer hook-up (per plan)
- High Efficiency Heating and Cooling (2- zoned units, one for each level)
- Fully Excavated Tall Pour Basement, waterproofed with Sump Pump, including perimeter Interior drain system
- R-13 wall and R-30 Ceiling insulation
- Standard Lever Hardware
- Lower level bath rough-In (per plan)



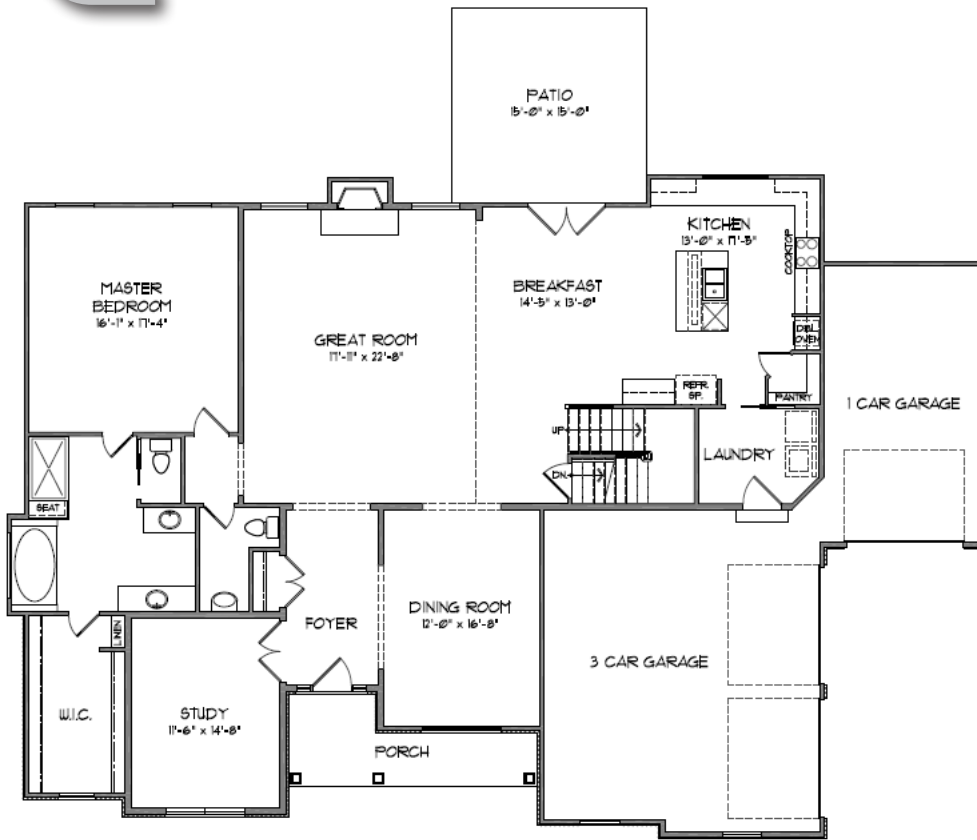
FRONT ELEVATION

INCLUDED KITCHEN FEATURES

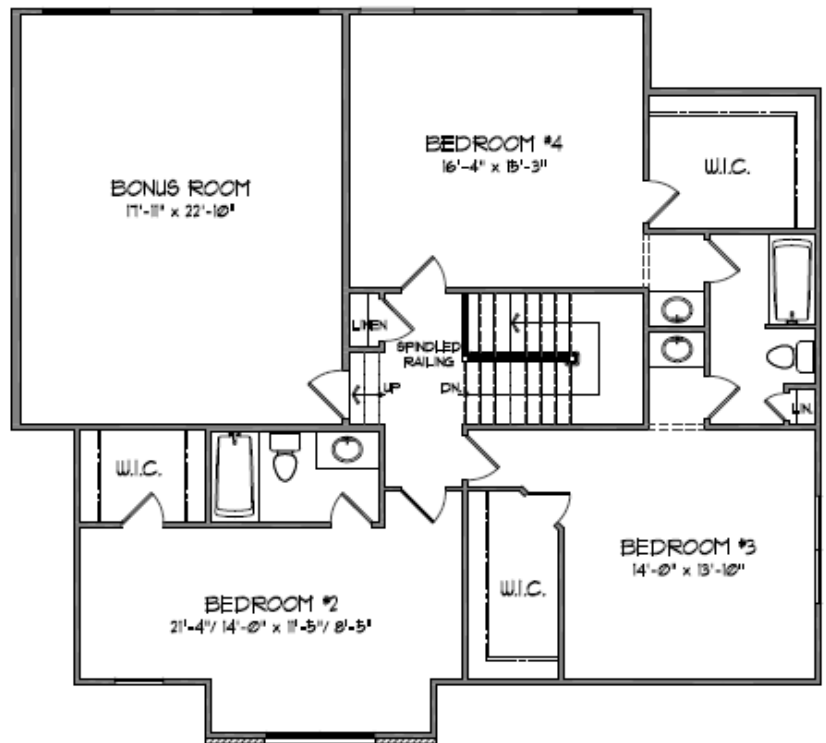
- Granite Countertops
- Stainless Steel Under-mount Sink with Elegant Faucet
- Ice Maker Line Pre-run, At Kitchen and lower level Bar
- Stainless Steel Appliances - Kitchen Aid - Electric range, dishwasher, microwave, Garbage disposal 3/4 HP
- Spacious Counter Height Breakfast Bar (per plan)
- Luxury Cabinets with 42 inch Uppers with Choice of Standard Panel and Color

INCLUDED DRAMATIC EXTERIOR FEATURES

- Exquisite Standard Elevations
- Vinyl Windows
- Vinyl Siding
- Enclosed Fascia and Soffit
- Standard 2 Car Side Entry Garage, 1 Car Front Entry Garage (per plan)
- Entry Door with Sidelights (per plan)
- Aluminum Gutters and Downspouts, seamless
- Concrete driveway
- 2 Exterior Hose Bibs, freeze proof
- Insulated Garage Doors with door openers and remotes (windows per plan)
- Concrete Patio 15' x 15'
- Entry lights at all exterior doors
- Finish grade to code and sod disturbed area of front yard, seed remainder disturbed areas.
- 2 exterior weatherproof receptacles, one in front and one in rear
- 30-year architectural shingles



FIRST FLOOR PLAN  
2278 SQ. FT.



SECOND FLOOR PLAN  
1646 SQ. FT.